

# DAVIS INDUSTRIAL PARK

14,400 Sq. Ft.  
Warehouse/Industrial  
Space For Lease

**A** 3205 - 3217  
N.W. YEON



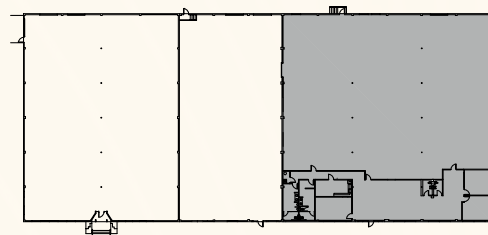
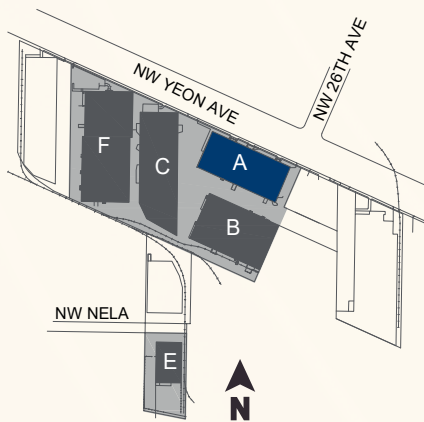
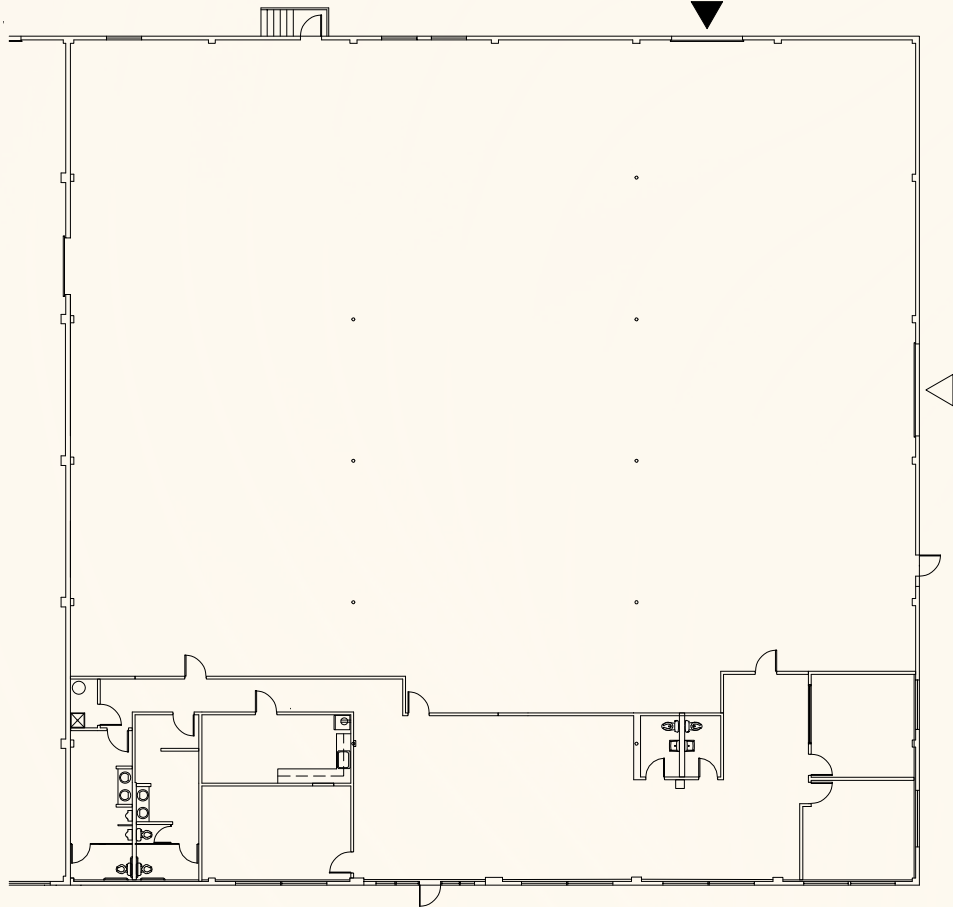
3217 NW Yeon Ave, Portland, OR 97210

**PACTRUST**

### Space Plan | 13' Clear Height

**PacTRUST**

- ▲ Dock Access
- △ Grade Access



**Building Plan**

Building A



# Key Features



14,400 sq. ft shell



3,268 sq. ft. office



1 dock door  
1 grade door

LED lighting

Convenient access to I-405 and I-5

Desirable Guilds Lake location

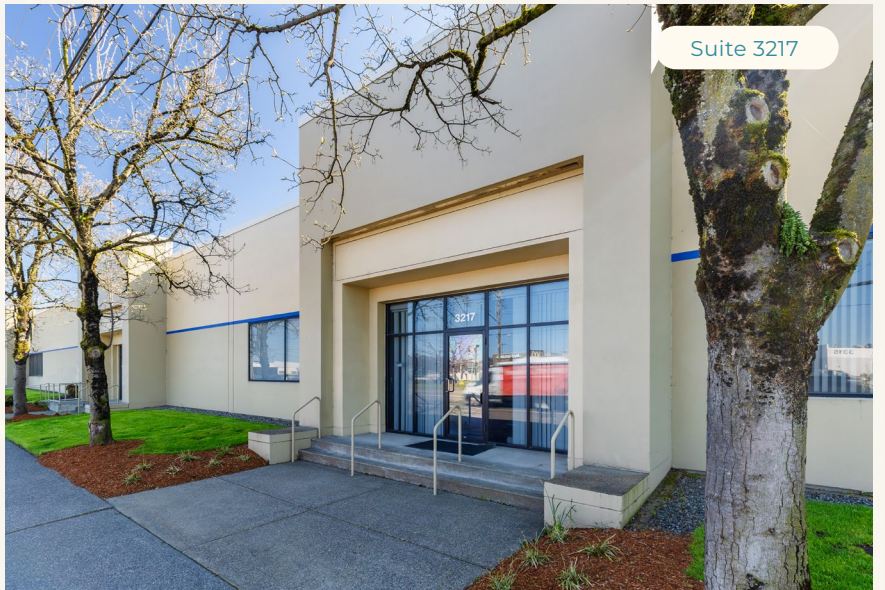
## Lease Rate:

**\$0.85/sq. ft. shell**

**\$1.00/sq. ft. office**

**NNN Lease**

Suite 3217



# Leasing Contacts

Jake Bigby

jakeb@pactrust.com

Caitlin Knecht

caitlink@pactrust.com

503.624.6300

www.pactrust.com

Owned & Managed by

**PacTrust**

Davis Industrial Park  
Warehouse/Industrial Space For Lease

3217 NW Yeon Ave  
Portland, OR 97210

